

MFB Accessories - Miscellaneous



Document Pocket

Suitable for fitting to the inside face of doors, side panels etc, accepts up to A4 size. Attachment is by double sided foam tape.



Eye Bolts

Forged steel and come with an M10 thread and a galvanised plated finish. These certified 250kg each load capacity eye bolts should be specified at time of ordering and for safe lifting spreader bars should always be used. Refer to General Notes on inside back cover. Two types available to suit RFI and Industrial Cabinets and plain and grille tops.



Document Pocket

TYPE	CODE
DOOR POCKET	12135-01

Eye Bolts

TYPE (Set of 4)	CODE
A/B VENTED TOP	03033-02
A/B PLAIN OR GRILLE TOP	03033-03
S2005	03033-04
RFI & INDUSTRIAL	03033-05

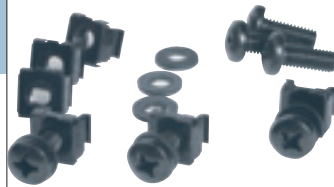
MISCELLANEOUS

Miscellaneous: Wash Handle, Cage Nut Assembly, Rack Mounting Storage Bin, Document Pocket, Mounting Angle, Rail, Front Panel Eye Bolts	Air Management: 1ru Telescopic Fan Tray, 1ru Fixed Fan Tray, Roof Fan Tray, Plinth Fan Unit, 19" Fan Panels, Seiffert Side Mounted Air Conditioner, Seiffert Roof Mounting Air Conditioner, Seiffert Recessed Air Conditioner, Seiffert 19" Rack Mounted Air Conditioner	Power Distribution: Horizontal PDP (6outlet), Hi Density horizontal PDP (10outlet), Vertical PDP, Vertical PDP with Neon Light Switch, Horizontal Telephone Distribution Panel, Vertical Telephone Distribution Panel, 1ru Fluorescent Light	Consoles: Profile A, Profile B, Profile C, Profile D, Profile E, Profile F, Profile G, Profile H, Profile J, Profile L, 45 Wedge, 22.5 Wedge	Accessories: Shelves, Panels, Cable Management, Power Distribution, Air Management, Plinth & Base Accessories, Miscellaneous.	Open Racks: 19" Laboratory Racks, Aluminium Channel Racks, Steel Channel Racks	Shelves: Cantilever, Flat, Heavy Duty, Type B, Telescopic, Telescopic with Pivot Plate, Telescopic Writing Desk, Telescopic Drawers, Modern Shelf Bracket, Fixed Equipment Rail, Telescopic Extension Bracket.	Consoles: Profile A, Profile B, Profile C, Profile D, Profile E, Profile F, Profile G, Profile H, Profile J, Profile L, 45 Wedge, 22.5 Wedge	Cabinets: S2005, S2005A/B, S2005B, Network Server, Type A, Type B, S eries 94, Wall Mount, ETSI, Industrial, RFI	Power Distribution: Horizontal PDP (6outlet), Hi Density horizontal PDP (10outlet), Vertical PDP, Vertical PDP with Neon Light Switch, Horizontal Telephone Distribution Panel, Vertical Telephone Distribution Panel, 1ru Fluorescent Light	Open Racks: 19" Laboratory Racks, Aluminium Channel Racks, Steel Channel Racks
---	--	--	---	--	--	---	---	--	--	--



Cage Nut Assembly

Comprises M6 cage nut, a nylon washer and an M6 x 16 pan head cross recess screw with a black finish and supplied in packs of 50.

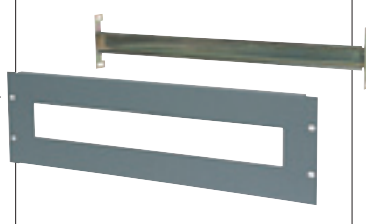


Cage Nut Assembly

ASSEMBLY	CODE
50 X NUTS 50 X SCREWS 50 X WASHERS	03025-04

DIN Rail and Front Panel

DIN rail and front panel are designed to accept DIN rail mounting components like circuit breakers, earth bars etc. The DIN rail is finished in zinc and yellow passivate whilst the front panel can be matched to other panel colours. The panel cut-outs will accept various blanking plates to infill between components and can be customised to suit individual applications.



Din Rail and Front Panel

TYPE	CODE
3RU FRONT PANEL TO SUIT - 19"	12055-01
3RU FRONT PANEL TO SUIT - 650	12055-02
3RU FRONT PANEL TO SUIT - SERIES 2005, 700	12055-08
3RU FRONT PANEL TO SUIT - SERIES 2005, 800	12055-03
DIN RAIL - 19" TYPE A	12054-01
DIN RAIL - 650 TYPE A	12054-02
DIN RAIL - 19" TYPE B	12054-03
DIN RAIL - 650 TYPE B	12054-04
DIN RAIL - SERIES 2005, 700	12054-09
DIN RAIL - SERIES 2005, 800	12054-05