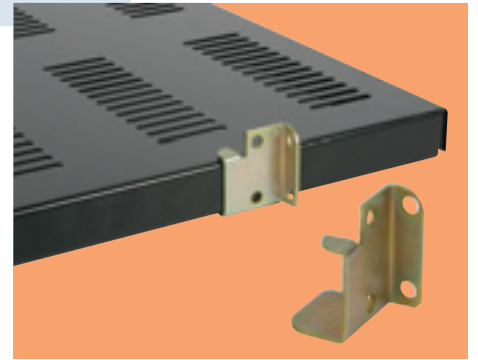


SHELVES



Flat Shelf - Heavy Duty

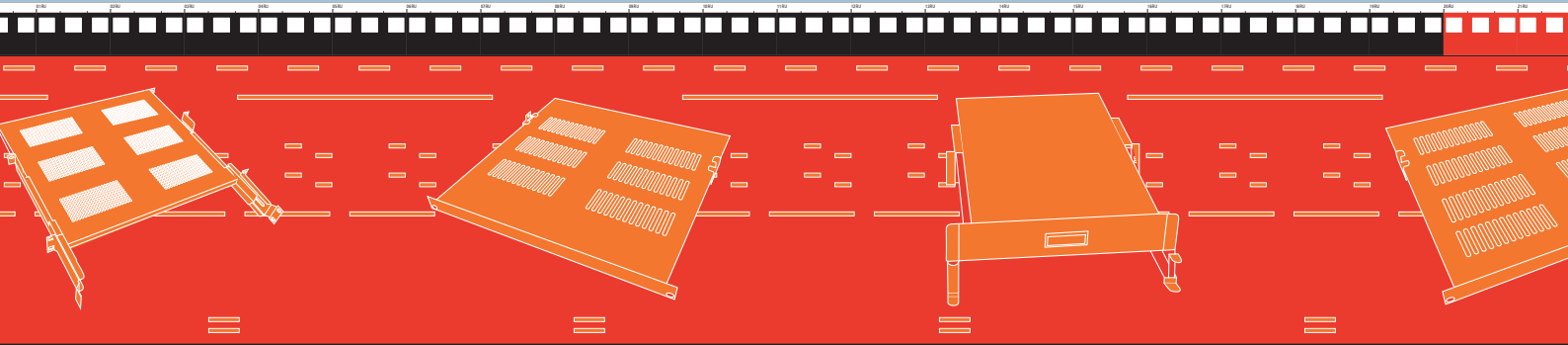
Heavy duty shelves are 30mm thick and can carry loads of up to 80kg evenly distributed.



Flat Shelf - Heavy Duty

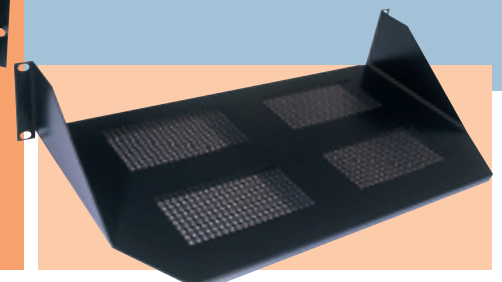
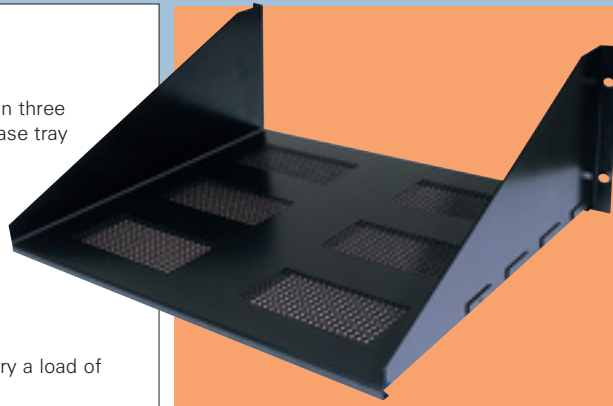
DEPTH	19" CODE	650 CODE	700 CODE	800 CODE
500	03051-04	03051-13	03051-53	03051-21
600	03051-06	03051-14	03051-54	03051-24
700	03051-08	03051-17	03051-55	03051-27
800	03051-40	03051-19	03051-57	03051-29

NOTE: Designed for use with either the type A or C mounting angles.



Cantilever Shelves

- Available in 6 standard sizes. The shelves are constructed in three parts – (2 side plates and a base tray that key together).
- Side & Base parts ordered separately.
- Non standard sizes can be produced.
- All trays are vented.
- Standard size shelves will carry a load of 30kg evenly distributed.



Cantilever Shelf Side Plates

SIZE	CODE
2RU	02727-10
3RU	02727-11
4RU	02727-12
5RU	02727-13

Cantilever Shelf - Base

DEPTH	19" CODE	650 CODE	700 CODE	800 CODE
300	12068-63	12068-43	12068-75	12068-67
350	12068-61	12068-41	12068-76	12068-68
400	12068-60	12068-40	12068-77	12068-69
450	12068-64	12068-44	12068-78	12068-70
500	12068-65	12068-45	12068-79	12068-71

Cantilever Shelf One Piece 2RU x 250mm

SIZE	CODE
19"	12068-46
650	12068-47
700	12068-49
800	12068-48