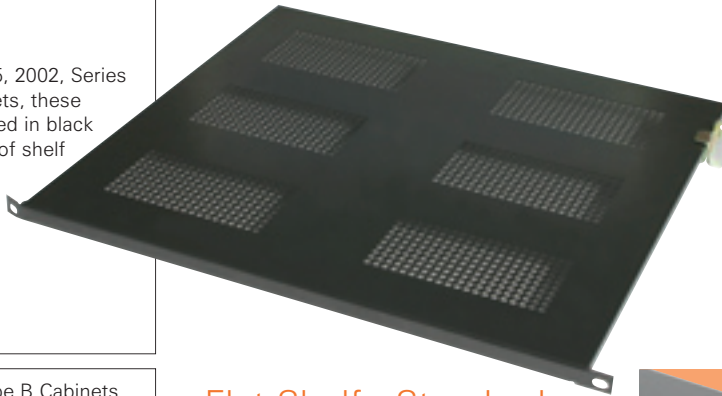


Flat Shelf - Standard

Designed to suit Type A, 2005, 2002, Series 210, RFI and Industrial Cabinets, these shelves are vented and finished in black powder coat. Various depths of shelf may be mounted in the same rack using our quick, easy mounting system. This shelf can carry loads of up to 35kg evenly distributed.

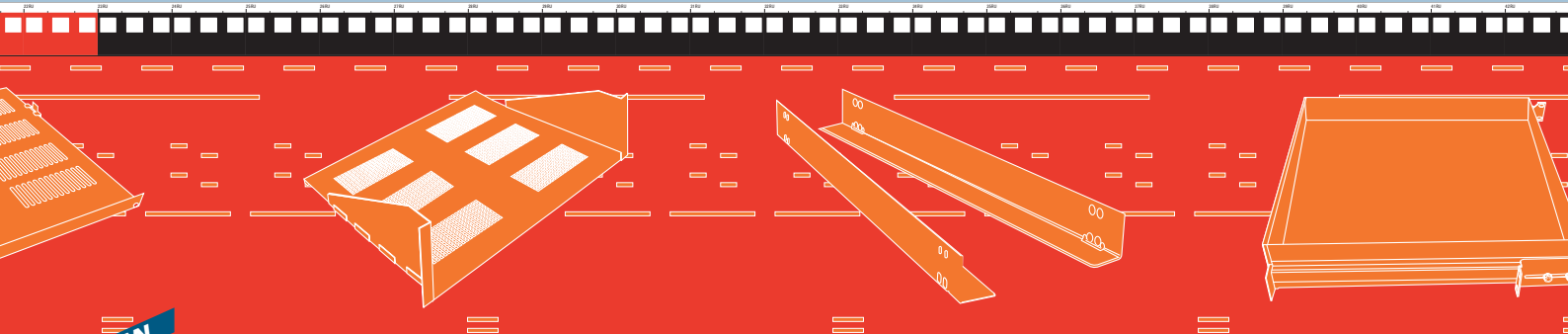
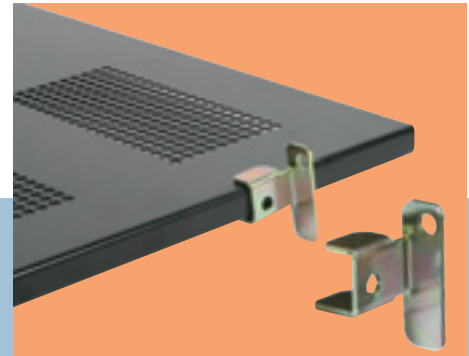


For flat shelves to suit the Type B Cabinets please use the table below

Flat Shelf - Standard

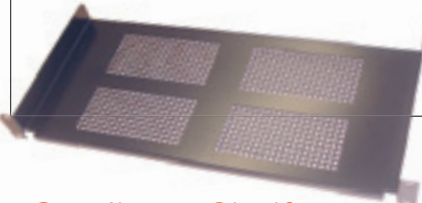
RACK DEPTH	19" CODE	650 CODE	DEPTH	19" CODE	650 CODE	700 CODE	800 CODE
495	03010-04	03011-04	300	03010-01	03011-01	03012-30	03012-10
626	03010-08	03011-07	400	03010-02	03011-02	03012-31	03012-11
804	03051-40	03051-19	500	03010-04	03011-04	03012-33	03012-13
			600	03010-06	03011-06	03012-34	03012-15
			700	03010-09	03011-08	03012-35	03012-17

NOTE: *Designed for use with either the type A or C mounting angles.*



1RU x 19" Cantilever Shelf

- Designed to suit all 19" rack enclosures and open frames, the one piece shelf is suited for small, lightweight equipment.
- The shelf is 1RU high, 200mm deep and fully vented, it comes with all fixing hardware.
- The shelf will carry a load of 6kg evenly distributed.

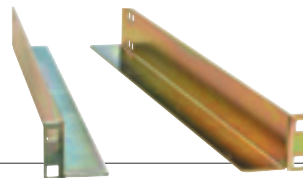


Cantilever Shelf One Piece 1RU x 200mm

SIZE	CODE
19"	12068-50

Fixed Equipment Slides Type A/C

Type A/C Cabinet Slides suit Type A, Industrial, RFI, 2005 and Series 210 cabinets and are supplied in pairs with three lengths to choose from, all will carry loads in excess of 50kg and have a zinc plated and yellow passivate finish.

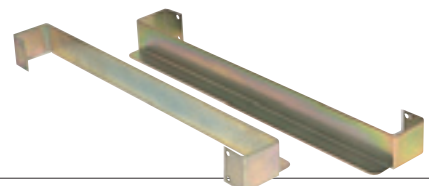


Fixed Equipment Rail Type A/C

DEPTH	CODE (per pair)
350	03059-01
340	03059-02
550	03059-03
660	03059-04

Fixed Equipment Slides Type B

The cabinet depth determines the length of slides, nominal cabinet depth describes the slide size. All will carry loads to 50kg and come with a zinc plated and yellow passivate finish. They are not handed.



Fixed Equipment Rail Type B

DEPTH	CODE (per pair)
545	03059-10
675	03059-11
855	03059-12