

MFB Accessories - Shelves

Telescopic Shelf with Pivot Plate

This shelf allows for a standard width keyboard to be used in a 19" rack. The keyboard is placed on the pivot plate and when the shelf is withdrawn the keyboard can be pivoted around for use.

A rear short or long telescopic extension kit must be ordered separately, depending on the distance between the front & rear mounting angles within the rack - please refer to the chart below for selecting the correct kit. Depth of shelf is 450mm.



REVISED PRODUCT

Telescopic Shelf with Pivot Plate

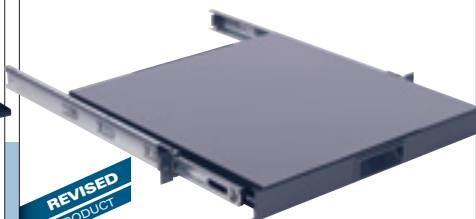
TYPE	CODE
TELE. SHELF WITH PIVOT PLATE	03071-01

Telescopic Shelf

Designed to allow non 19" mounting equipment to be housed in a rack when access to other than the front is a requirement.

A rear short or long telescopic extension kit must be ordered separately, depending on the distance between the front & rear mounting angles within the rack - please refer to the chart below for selecting the correct kit.

All sizes take 45kg load evenly distributed.



REVISED PRODUCT

Telescopic Shelf

DEPTH	19" CODE	650 CODE	700 CODE	800 CODE
350	03048-01	03048-02	03048-29	03048-22
450	03048-03	03048-04	03048-30	03048-23

NOTE: Telescopic items have provision for mounting Hinged Cable Carrier. Page-66.

MFB use "Accuride R" slides on all telescopic mounting accessories, they were chosen by MFB for their smooth action under heavy loads, superior features and extreme durability.

Telescopic Writing Desk

Comes complete with a writing surface and a storage tray underneath. Like the shelf it occupies 1RU. The writing surface is hinged along its rear edge and opens to provide a storage tray for pencils and other small objects.

A rear short or long telescopic extension kit must be ordered separately, depending on the distance between the front & rear mounting angles within the rack - please refer to the chart below for selecting the correct kit.



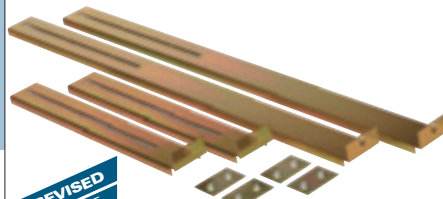
REVISED PRODUCT

Telescopic Writing Desk

DEPTH	19" CODE	650 CODE	700 CODE	800 CODE
350	03049-01	03049-02	03049-07	03049-05
450	03049-03	03049-04	03049-08	03049-06

Telescopic Extension Kits

Telescopic Extending Rear Brackets are used when mounting rails are set at extended distances. Generally used in deeper frames they provide flexibility when positioning accessories in the rack when items of different depths are used.



REVISED PRODUCT

Telescopic Extension Kits

SLIDE LENGTH	SHORT REAR BCKTS		LONG REAR BCKTS	
	MIN	MAX	MIN	MAX
350	335	520	635	820
450	335	650	635	950

TYPE	CODE
Short Extension	03008-03
Long Extension	03008-04

Telescopic Drawers

Standard sizes available 2RU and 3RU fitted with a central pull out handle.

A rear short or long telescopic extension kit must be ordered separately, depending on the distance between the front & rear mounting angles within the rack - please refer to the chart below for selecting the correct kit.

All sizes take 45kg load evenly distributed.



REVISED PRODUCT

Telescopic Drawer

DEPTH	19" CODE	650 CODE	700 CODE	800 CODE
2RUx350	03050-01	03050-02	03050-18	03050-12
3RUx350	03050-03	03050-04	03050-20	03050-15
2RUx450	03050-05	03050-10	03050-19	03050-14
3RUx450	03050-06	03050-11	03050-21	03050-16